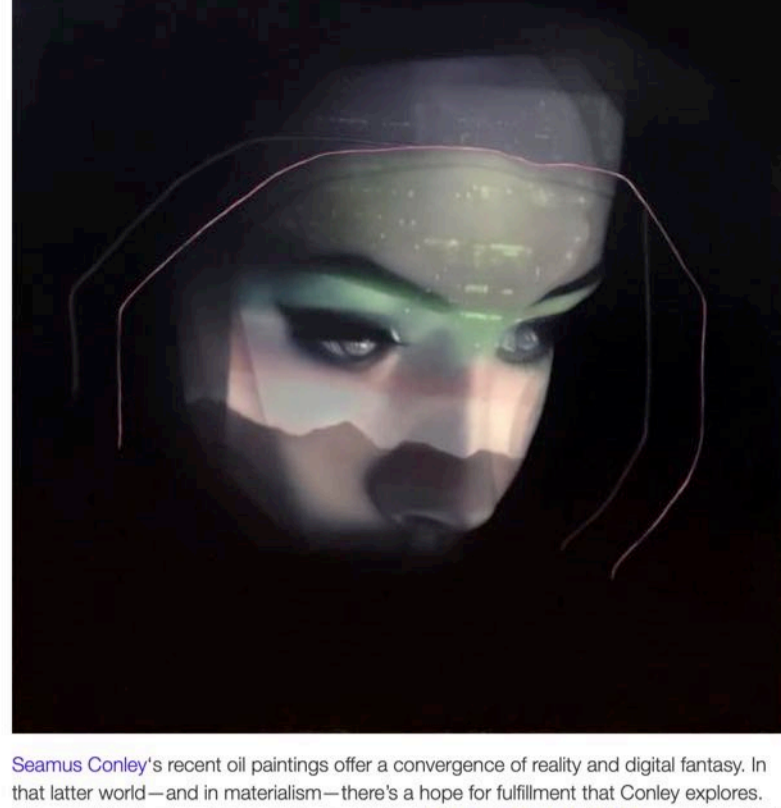
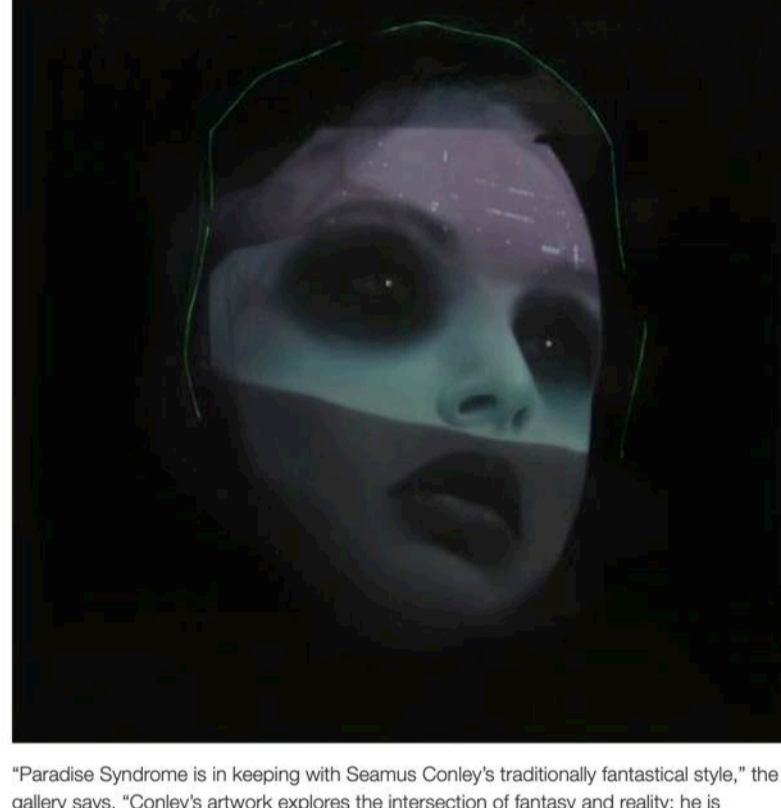
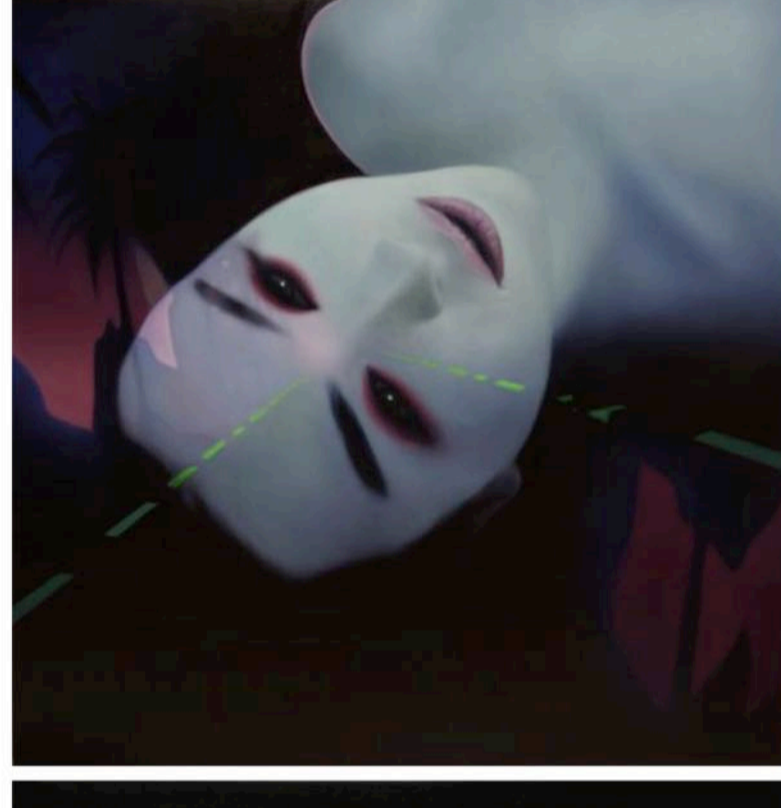
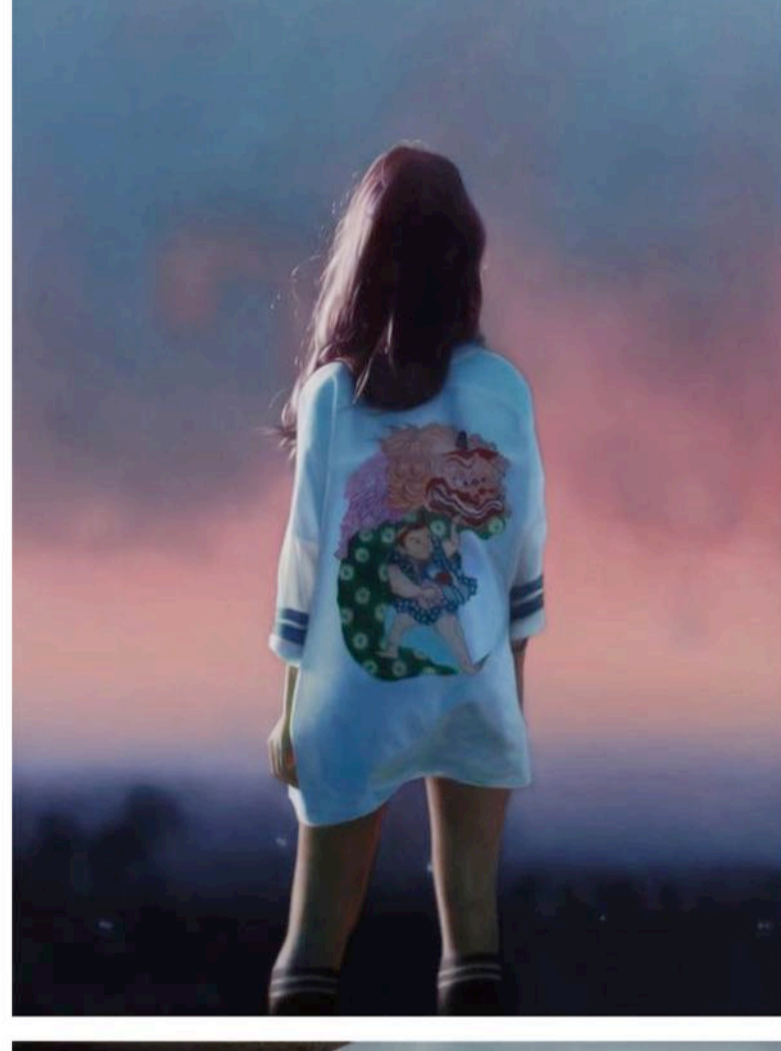
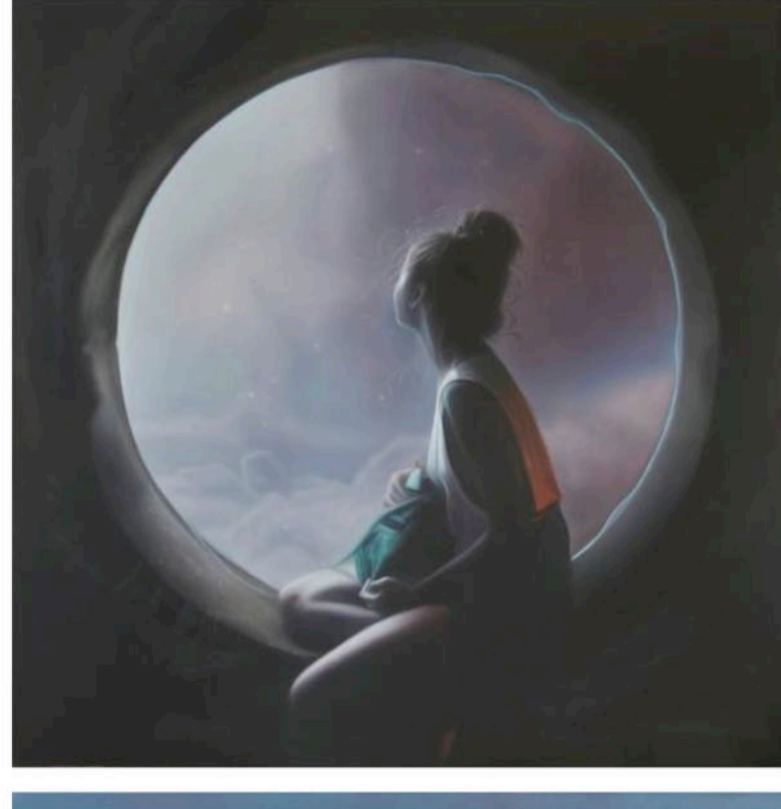
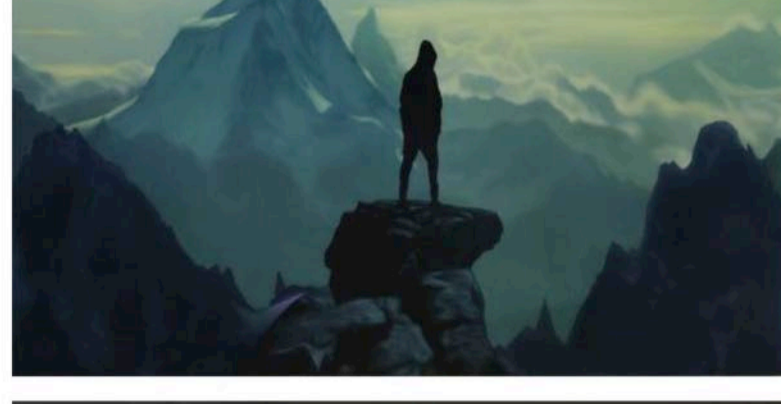


Seamus Conley's Work Traverses Digital Fantasy, Reality
 by Andy Smith Posted on November 16, 2018

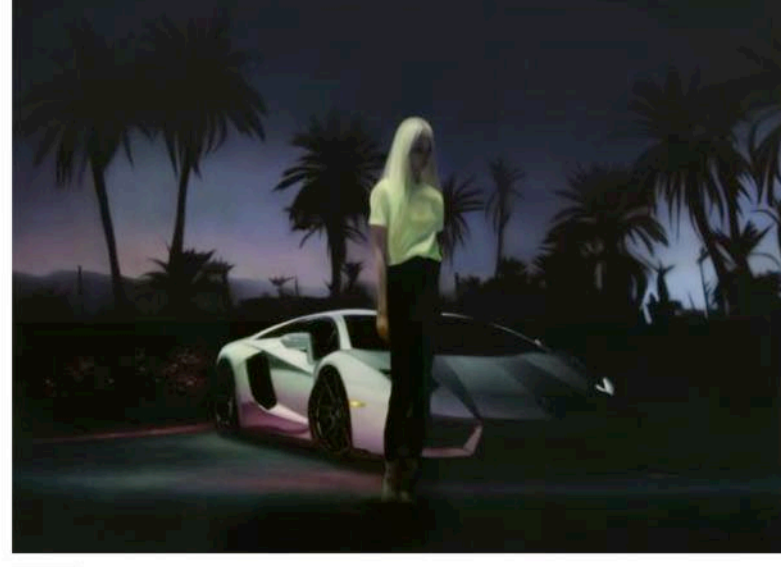
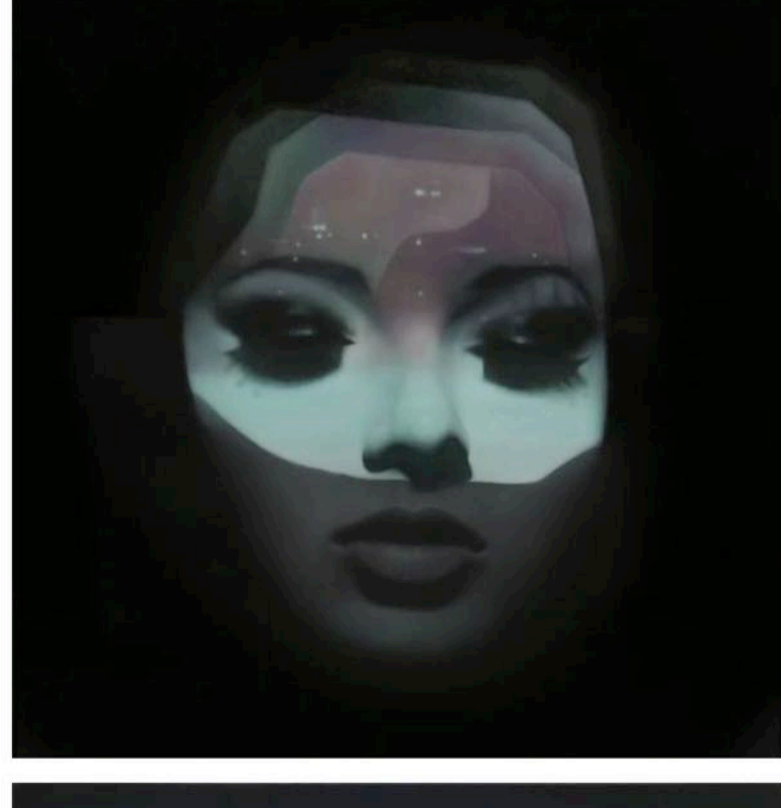
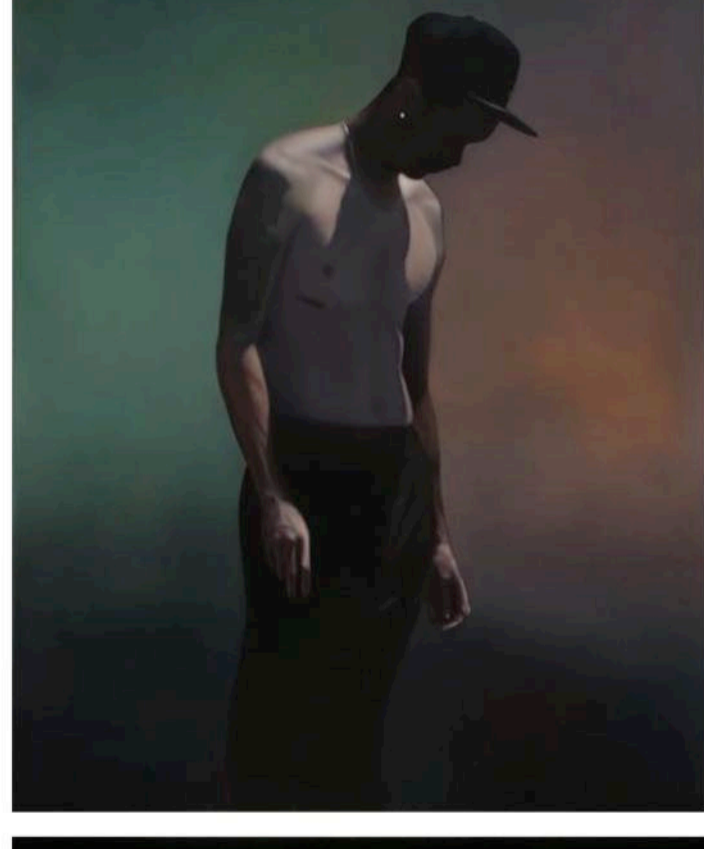


Seamus Conley's recent oil paintings offer a convergence of reality and digital fantasy. In that latter world—and in materialism—there's a hope for fulfillment that Conley explores. His recent body of work is currently on display at Andrea Schwartz Gallery, in a show that runs through Dec. 21.



"Paradise Syndrome is in keeping with Seamus Conley's traditionally fantastical style," the gallery says. "Conley's artwork explores the intersection of fantasy and reality; he is interested in portraying the experience of daydreaming while simultaneously existing in the external world. In this body of work, Conley also examines artificial intelligence through portraiture."

See more of his recent work below.



SHARE:



← Previous

